



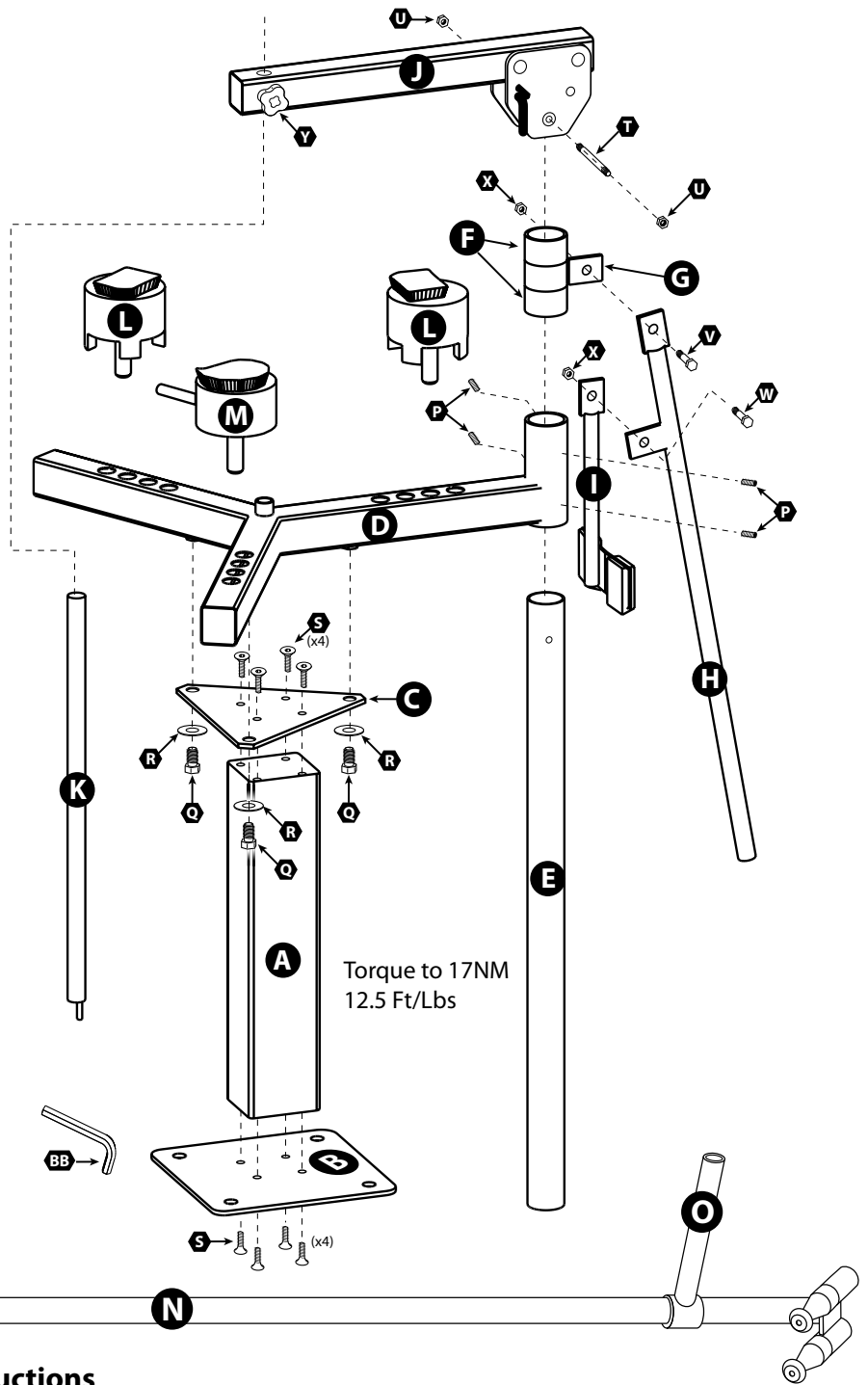
Classic Model Assembly Instructions

Machine Parts

- A** Stand Post
- B** Stand Bottom Plate
- C** Stand Top Plate
- D** Frame
- E** Back Post
- F** Collar (2)
- G** Tab Collar
- H** Bead Breaker Arm
- I** Bead Breaker "T"
- J** Upper Arm
- K** Center Post
- L** Dog Block (2)
- M** Cam Block
- N** Mount/Demount Bar
- O** M/D Bar Handle

Assembly Parts

- P** 5/16" x 5/16" set screw (8)
- Q** 1/2" x 1" hex bolt (3)
- R** 1/2" Washer (3)
- S** 5/16" x 1" Flat Socket Head Screw (8)
- T** 5/16" x 3" Stud
- U** 5/16" Nyloc Nut (2)
- V** 5/16" x 3/4 Shoulder Bolt (1)
- W** 5/16" x 5/8 Shoulder Bolt (1)
- X** 1/4" Nyloc Nut (2)
- Y** Small Knob
- AA** Replacement Tips (3)
- BB** 3/16" Allen Wrench (stand)
- CC** 5/32" Allen Wrench
- DD** 5/16" x 1/4" set screw



Classic Model Tire Changer Assembly Instructions

Changer Placement: It is recommended assembling the tire changer before mounting to the floor so the user will better understand the space needed for the changer and changer tools.

STEP 1 Attach Stand Base (B) and Stand Top (C) to Stand Post (A) Using (8) Screws (S) with thread lock sealant¹ (included). Torque to 17Nm or 12.5 Ft Lbs.

STEP 2 Attach Frame (D) to the Machine Stand Assembly, using 3 hex bolts (Q) and washers (R).

STEP 3 Slide Back Post (E) into the top of the Frame (D). Attach with 4 set screws (P).

STEP 4 Secure one Collar (F) onto the Back Post approximately 18" above Frame Arm by tightening 2 screws (P).¹

STEP 5 Slide Tab Collar (G) onto Back Post and leave loose. This part needs to spin freely.

STEP 6 Secure 1 Collar (F) onto the Back Post approximately 1/4" above Tab Collar (G) by tightening 2 screws (P).¹

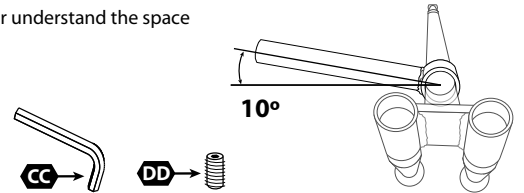
STEP 7 Attach Bead Breaker Arm (H) to the Tab Collar (G) using one shoulder bolt (V) and one Nyloc nut (X).

STEP 8 Attach Bead Breaker "T" (I) to the Bead Breaker Arm (H) using one shoulder bolt (W) and one Nyloc nut (X).

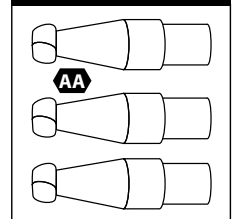
STEP 9 Position the Upper Arm (J) over the Back Post as shown. Slide one double ended stud (T) through the hole in the rear tab and secure on each end with Nyloc nuts (U). Do not overtighten. The upper arm will swing up and down freely, when released.

STEP 10 Insert the Center Post into the hole on the end of the Upper Arm. Hold in position using the Small Knob (Y) on the side. Adjust the Center post height according to the wheel and tire combination you are changing. See website for complete tire changing instructions and videos.

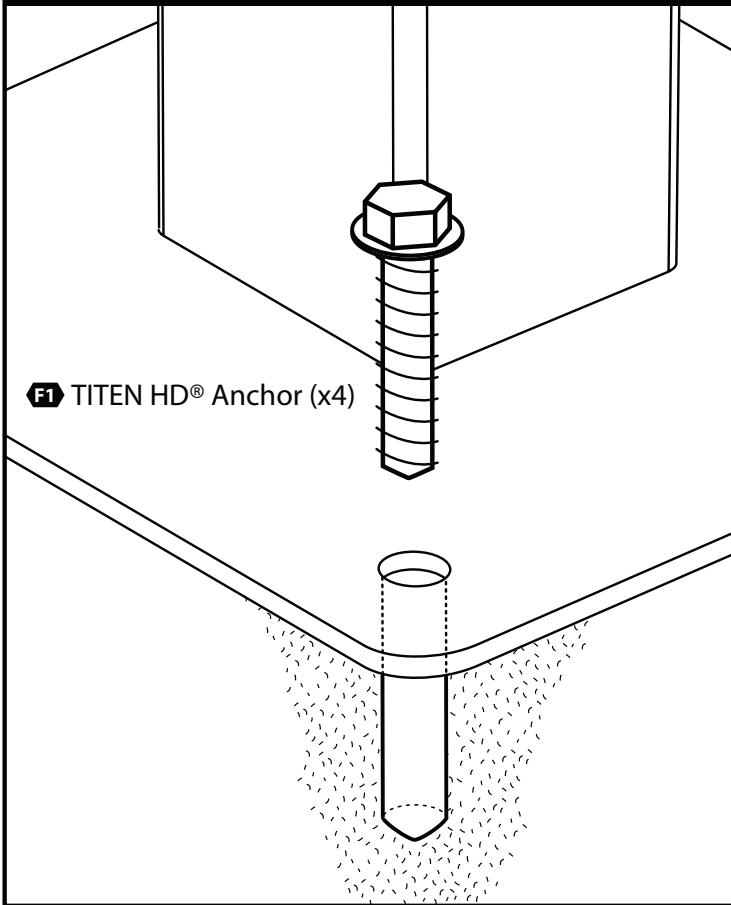
¹Pre-installed **Parts, labels, names, drawings, pricing and availability are subject to change without notice. See website for most current information.



REPLACEMENT TIPS



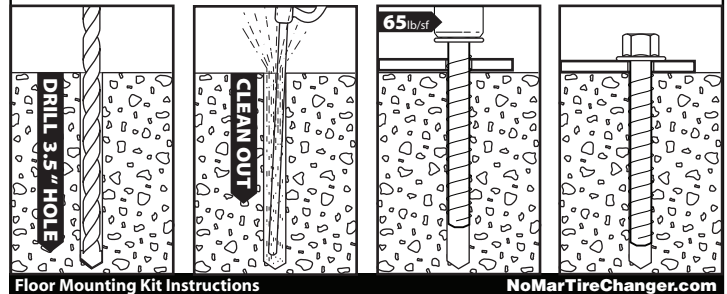
OPTIONAL FLOOR MOUNTING KIT



Using Simpson TITEN HD® Anchors To Mount A No-Mar Tire Changer

- 1) Drill a hole in the concrete floor or slab using a small or medium duty rotary/hammer drill and 1/2" masonry drill bit. Drill the hole to a minimum of 3-1/2" depth to allow the thread tapping dust to settle.
- 2) Blow the hole clean using compressed air or vacuum completely.
- 3) Insert the anchor through the fixture and into the hole.
- 4) Tighten the anchor into the base material until the hex washer head contacts the metal base plate. **Maximum Installation Torque:** 65 ft/lbs.
- 5) If the anchor will not install completely, remove the anchor and assure that all dust has been evacuated or drill the hole deeper. Begin re-installation of the anchor by hand to prevent cross-threading.
- 6) Do not use impact wrenches to install.

Caution: Oversized holes in the base material will reduce or eliminate the mechanical interlock of the threads with the base material and will reduce the anchor's load capacity. Use a Titen HD screw anchor one time only. Installing the anchor multiple times may result in excessive thread wear and reduce load capacity.

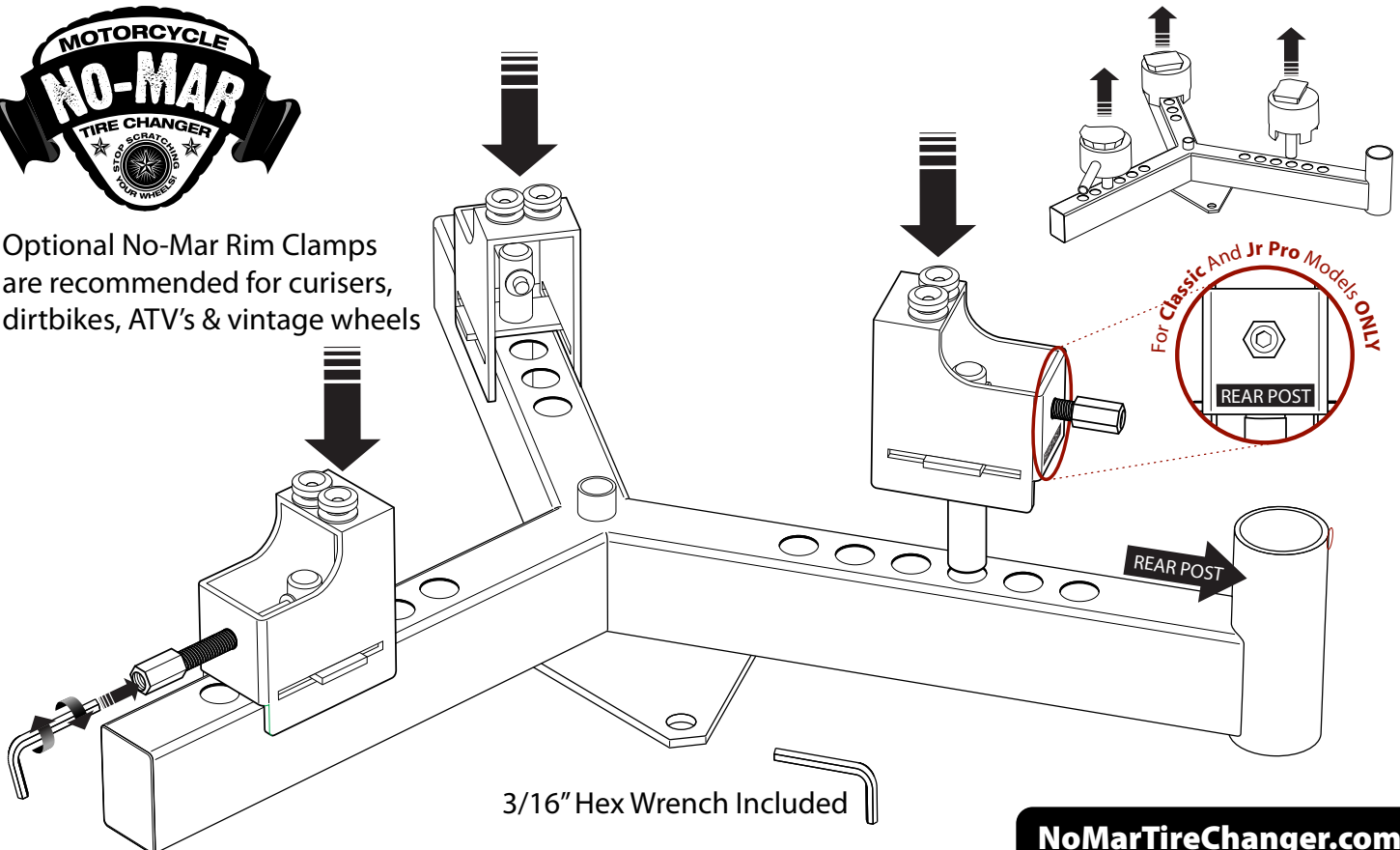


Floor Mounting Kit Instructions

NoMarTireChanger.com



Optional No-Mar Rim Clamps are recommended for cruisers, dirtbikes, ATV's & vintage wheels



3/16" Hex Wrench Included

NoMarTireChanger.com

Remove the Dog Blocks and Cam Block then insert the Rim Clamps. Note the Rear Post