



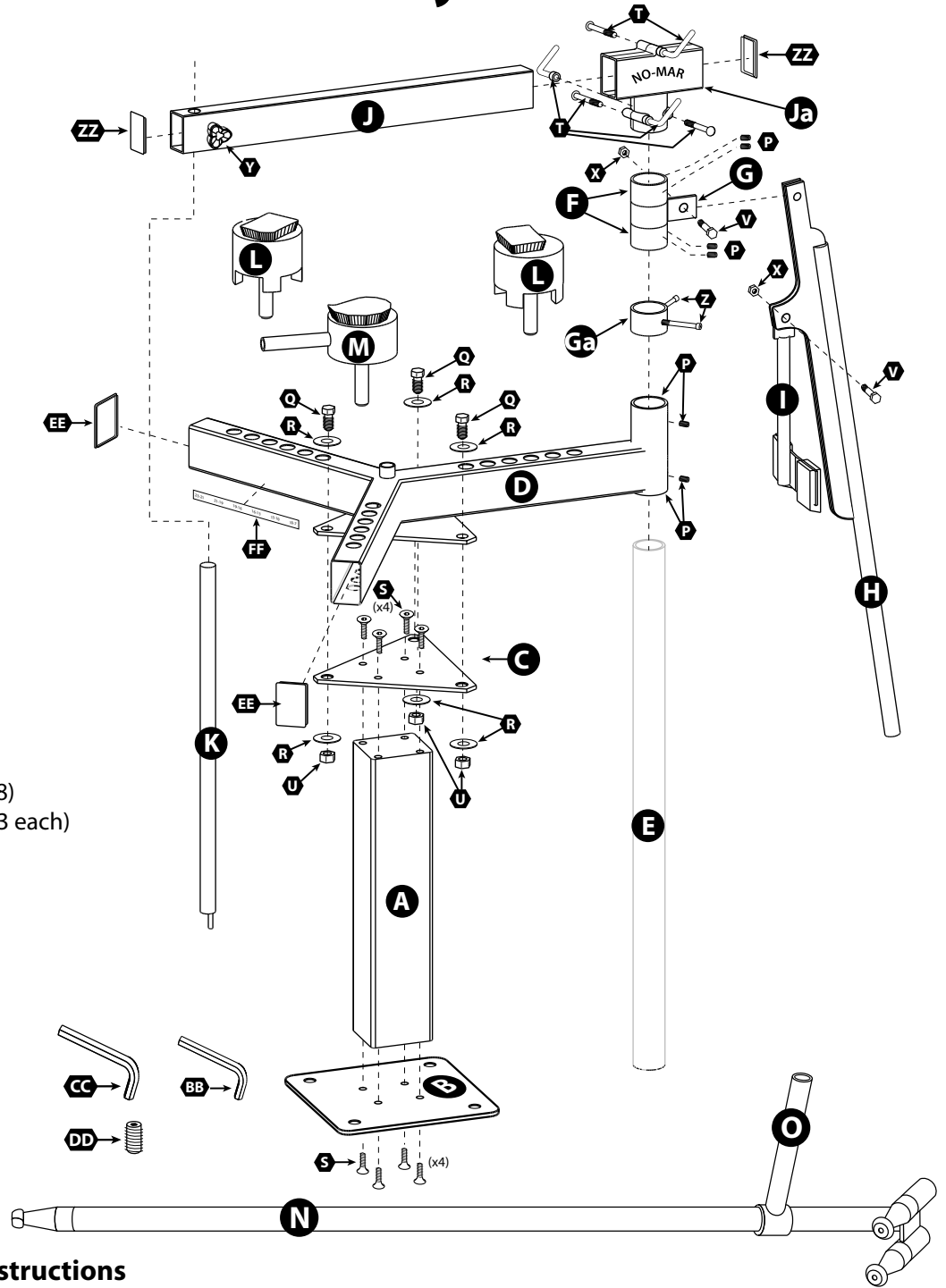
Jr Pro Model Assembly Instructions

Machine Parts

- A** Stand Post
- B** Stand Bottom Plate
- C** Stand Top Plate
- D** Frame
- E** Back Post
- F** Collar (2)
- G** Tab Collar
- Ga** Spoon Bar Collar
- H** Bead Breaker Arm
- I** Bead Breaker "T"
- J** Upper Arm
- Ja** Upper Arm "T" (2 halves)
- K** Center Post
- L** Dog Block (2)
- M** Cam Block
- N** Mount/Demount Bar
- O** M/D Bar Handle

Assembly Parts

- P** 5/16" x 5/16" Set Screw (8)
- Q** 1/2" x 1" Hex Bolt (3)
- R** 1/2" Washer (6)
- S** 5/16" x 1" Flat Socket Head Screw (8)
- T** 3" Carriage Bolt and Locking Lever (3 each)
- U** 1/2" Hex Nut (3)
- V** 5/16" x 3/4 Shoulder Bolt (2)
- X** 1/4" Nyloc Nut (2)
- Y** Small Knob (1)
- Z** 5/16" x 3" Socket Head Bolt (2)
- ZZ** Upper Arm Endcaps (2)
- AA** Replacement Tips (3) Pt# DT3B
- BB** 3/16" Allen Wrench (stand)
- CC** 5/32" Allen Wrench
- DD** 5/16" x 1/4" set screw
- EE** Frame Arm Endcaps (2)
- FF** Number System Label



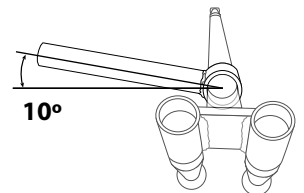
Jr Pro Tire Changer Assembly Instructions

Changer Placement: It is recommended assembling the tire changer before mounting to the floor so the user will better understand the space needed for the changer and changer tools.

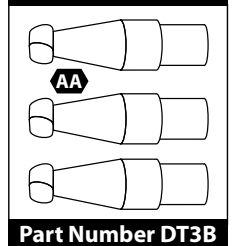
- STEP 1** Attach Stand Base (B) and Stand Top (C) to Stand Post (A) Using (8) Screws (S) with thread lock sealant¹ (included). Torque to 17Nm or 12.5 Ft Lbs. minimum.
- STEP 2** Attach Frame (D) to the Machine Stand Assembly, using 3 hex bolts (Q), 3 hex nuts (U), and 6 washers (R).
- STEP 3** Slide Back Post (E) into the post receiver on the Frame till the bottoms are flush (D). Attach with 4 set screws (P).
- STEP 4** Secure the Spoon Bar Collar (Ga) onto the Back Post approximately 10" above Frame Arm by tightening 2 screws (Z).¹
- STEP 5** Secure one Collar (F) onto the Back Post approximately 18" above Frame Arm by tightening 2 screws (P).¹
- STEP 6** Slide Tab Collar (G) onto Back Post and leave loose. This part needs to spin freely.
- STEP 7** Secure the second Collar (F) onto the Back Post approximately 1/8" above Tab Collar (G) by tightening 2 screws (P).¹
- STEP 8** Attach Bead Breaker Arm (H) to the Tab Collar (G), (between the tabs) using one shoulder bolt (V) and one Nyloc nut (X).
- STEP 9** Attach Bead Breaker "T" (I) to the Bead Breaker Arm (H) using one shoulder bolt (V) and one Nyloc nut (X).
- STEP 10** Position the Upper Arm "T" (Ja) over the Back Post as shown. Secure with Bolt and Lever (T) Slide the Upper Arm (J) in to the Upper Arm "T"; as shown.
- STEP 11** Insert the Center Post into the hole on the end of the Upper Arm. Hold in position using the Small Knob (Y) on the side. Adjust the Center post height according to the wheel and tire combination you are changing. Adjust back post height per requirement, see assembly video for details. See website for complete tire changing instructions and videos.

¹Pre-installed **Parts, labels, names, drawings, pricing and availability are subject to change without notice. See website for most current information.

www.NoMarTireChanger.com

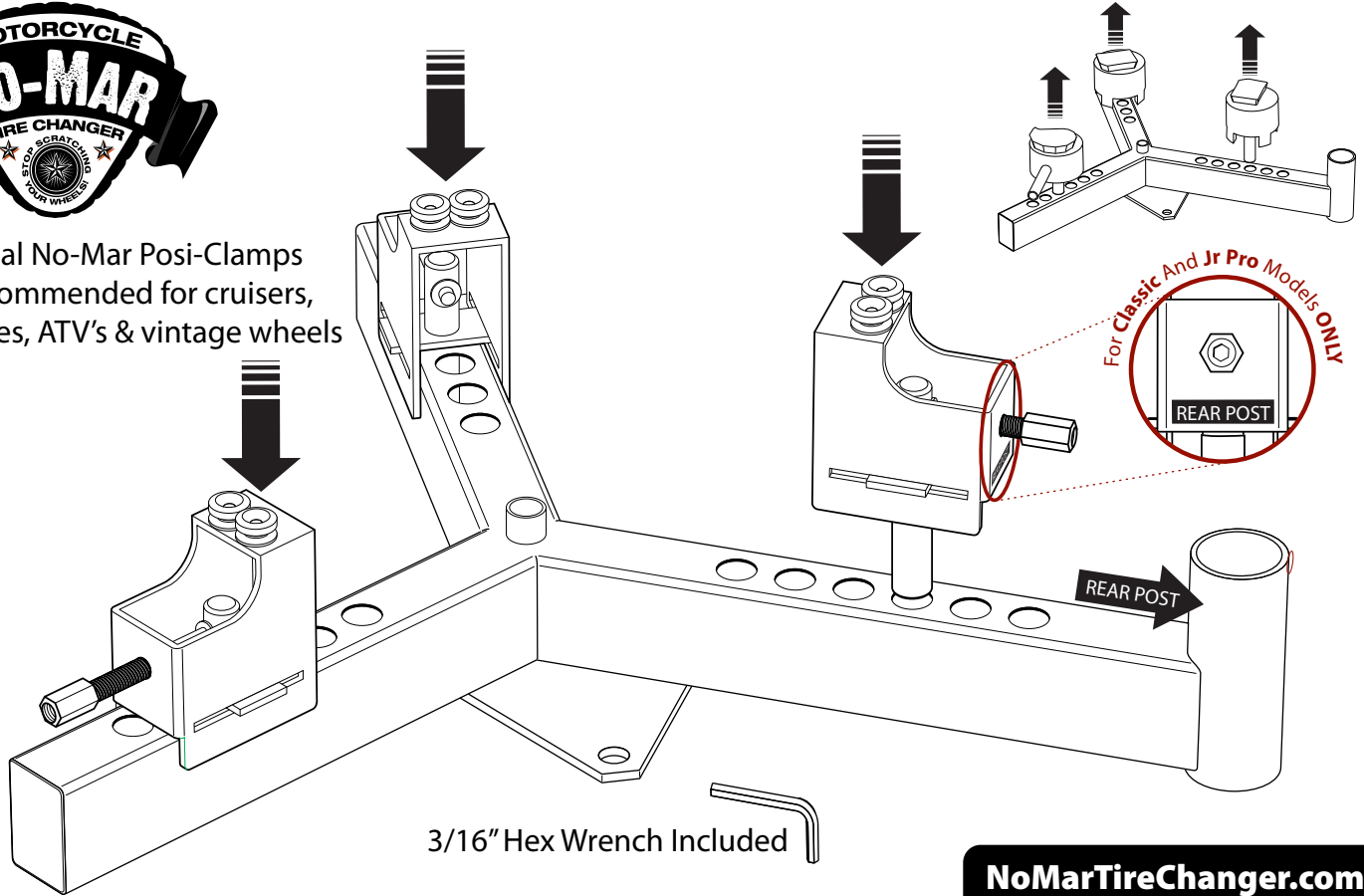


REPLACEMENT TIPS





Optional No-Mar Posi-Clamps are recommended for cruisers, dirtbikes, ATV's & vintage wheels

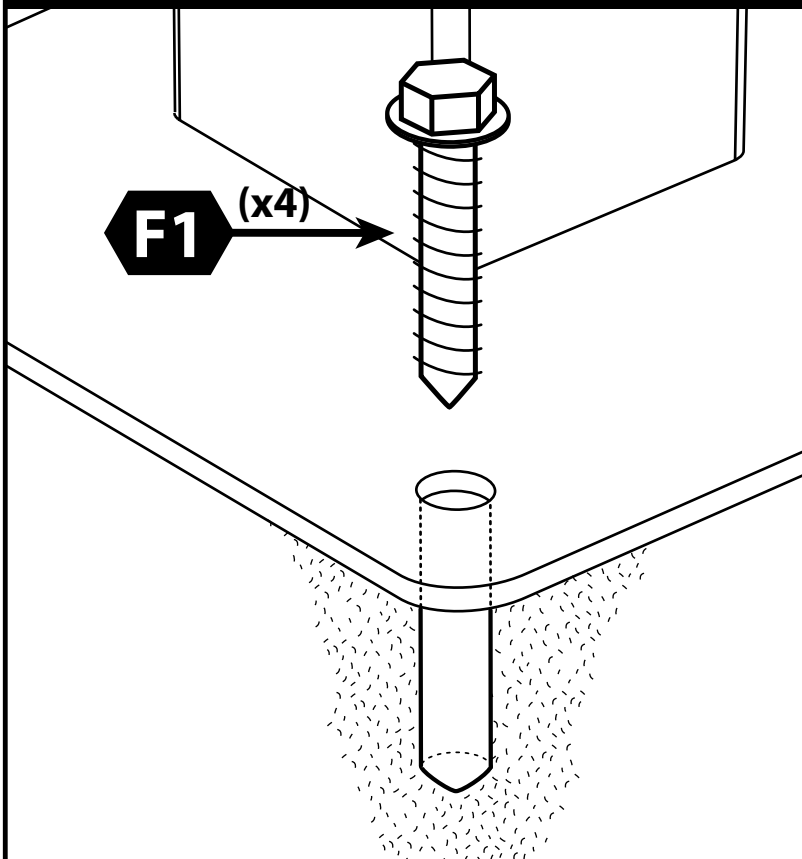


3/16" Hex Wrench Included

NoMarTireChanger.com

Remove the Dog Blocks and Cam Block then insert the Posi-Clamps. Note the Rear Post

FLOOR MOUNTING KIT

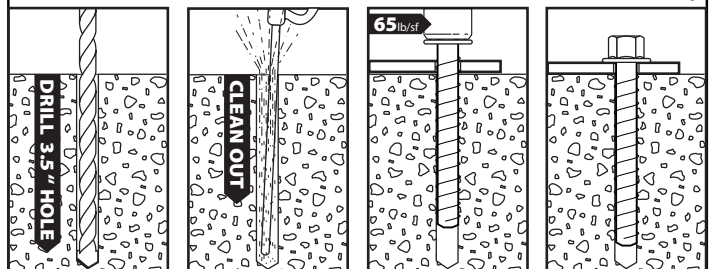


Using Simpson TITEN HD® Anchors To Mount A No-Mar Tire Changer

- 1) Drill a hole in the concrete floor or slab using a small or medium duty rotary/hammer drill and 1/2" masonry drill bit. Drill the hole to a minimum of 3-1/2" depth to allow the thread tapping dust to settle.
- 2) Blow the hole clean using compressed air or vacuum completely.
- 3) Insert the anchor through the fixture and into the hole.
- 4) Tighten the anchor into the base material until the hex washer head contacts the metal base plate. **Maximum Installation Torque:** 65 ft/lbs
- 5) If the anchor will not install completely, remove the anchor and assure that all dust has been evacuated or drill the hole deeper. Begin re-installation of the anchor by hand to prevent cross-threading.
- 6) Do not use impact wrenches to install.

Caution: Oversized holes in the base material will reduce or eliminate the mechanical interlock of the threads with the base material and will reduce the anchor's load capacity. Use a Titen HD screw anchor one time only. Installing the anchor multiple times may result in excessive thread wear and reduce load capacity.

SIMPSON
Strong-Tie
ANCHOR FASTENERS



Floor Mounting Kit Instructions

NoMarTireChanger.com